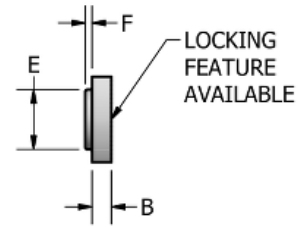
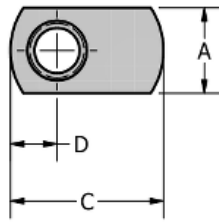


## Spot Weld Nut - Single Tab: SN 2816



Thread Size	5/16-24
Width (in)	5/8
Thickness (in)	9/64
Length (in)	63/64
A (in)	0.625
Tol A (in)	+0.030 / -0.005
B (in)	0.141
Tol B (in)	+0.004 / -0.002
C (in)	0.984
Tol C (in)	+0.015 / -0.015
D (in)	0.281
Tol D (in)	+0.015 / -0.015
E (in)	0.359
Tol E (in)	+0.010 / -0.010
F (in)	0.080
Hole In Sheet (in)	0.375
Material	C1010 High-Welding Quality, Low Carbon Steel
Finish	Plain, Unless Specified
Threads	Unified Standard Class 2B ASME B 1.1-2003



**BUCKEYE FASTENERS COMPANY**

DISTRIBUTED BY

**ADVANCE**   
COMPONENTS

advancecomponents.com

972-446-5500